

High Precision Lower Noise Direct Drive Drum Motor With Servo Controller For Rapid Sorting

Our Product Introduction

for more products please visit us on drum-roller.com

Basic Information

- Place of Origin: China Jiangsu
- Brand Name: Winroller
- Certification: CE,SGS,ISO9001,ROHS,UL
- Model Number: Winroller High Precision Lower Noise Direct Drive Drum Motor With Servo Controller
- Minimum Order Quantity: 1 stick
- Price: Contact Us
- Packaging Details: Wooden case
- Delivery Time: 7-15 word days
- Payment Terms: TT, L/C
- Supply Ability: 1000000/year

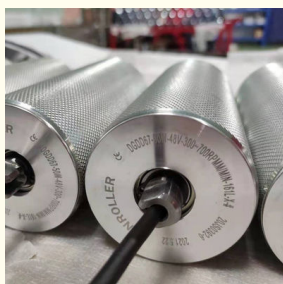


Product Specification

- Features: High Precision, Lower Noise, Direct Drive, Fast Response
- Product Name: High Precision Lower Noise Direct Drive Drum Motor With Servo Controller
- Motor Type: Permanent Magnet Servo Motor
- Diameter: 67mm
- Rated Voltage: DC48V
- Power: 400W
- Load: 20kg, 35kg, 60kg
- Speed Range: 300 - 762r/min
- Application: Cross Belt, Weighing, Sorting Trolley
- Highlight: **Lower Noise motorised drum rollers, Rapid Sorting motorised drum rollers, Servo Controller motorized drum roller**



More Images



High Precision Lower Noise Direct Drive Drum Motor With Servo Controller For Rapid Sorting

Features Overview of High Precision Lower Noise Direct Drive Drum Motor With Servo Controller

Our servo direct drive drum motor utilizes high-precision resolver servo control and is equipped with an inductive encoder as the position sensor. With no electronic components inside, it ensures excellent environmental adaptability, resists electrostatic threats, and achieves zero maintenance.

Function of High Precision Lower Noise Direct Drive Drum Motor With Servo Controller

High Precision Control: Provides accurate positioning and speed control for enhanced operational efficiency.

Low Noise Operation: Minimizes sound levels, making it suitable for noise-sensitive environments.

Direct Drive Mechanism: Eliminates the need for gears, reducing maintenance and wear while improving response time.

Fast Response Time: Achieves rapid acceleration and deceleration, ensuring quick adaptation to varying operational demands.

Environmental Adaptability: Designed to operate effectively in a wide range of conditions, resistant to electrostatic interference.

Energy Efficiency: Optimizes power consumption, contributing to lower operational costs.

Durable Construction: Built with robust materials to withstand heavy loads and harsh environments.

Zero Maintenance: The design reduces the need for regular upkeep, enhancing reliability and reducing downtime.

Application of High Precision Lower Noise Direct Drive Drum Motor With Servo Controller

E-commerce Logistics: Ideal for automated sorting systems and conveyor lines, ensuring efficient package handling and delivery.

Food Processing: Suitable for food packaging and handling where hygiene and low noise are critical.

Pharmaceutical Industry: Used in environments requiring precise control and minimal contamination risk.

Material Handling: Effective in automated warehouses and manufacturing plants for transporting goods and materials.

Airport Baggage Systems: Ensures reliable and quiet operation in luggage handling and sorting systems.

Automated Guided Vehicles (AGVs): Enhances the performance of AGVs in logistics and production settings.

Weighing Systems: Supports accurate weight measurement applications where precision and stability are essential.

Technical Parameters of High Precision Lower Noise Direct Drive Drum Motor With Servo Controller

High Precision Lower Noise Direct Drive Drum Motor With Servo Controller

Motor Type	Permanent magnet servo motor	Diameter	67mm
Rated Voltage	DC48V	Power	400W
Load	20kg, 35kg, 60kg	Speed range	300 - 762r/min
Features	High precision, lower noise, direct drive, fast response	Application	Cross belt, weighing, sorting trolley

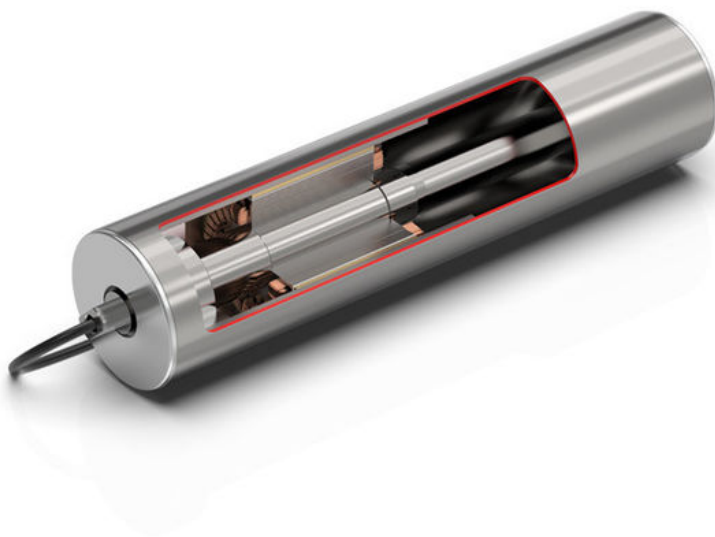
Electric roller Motor parameters

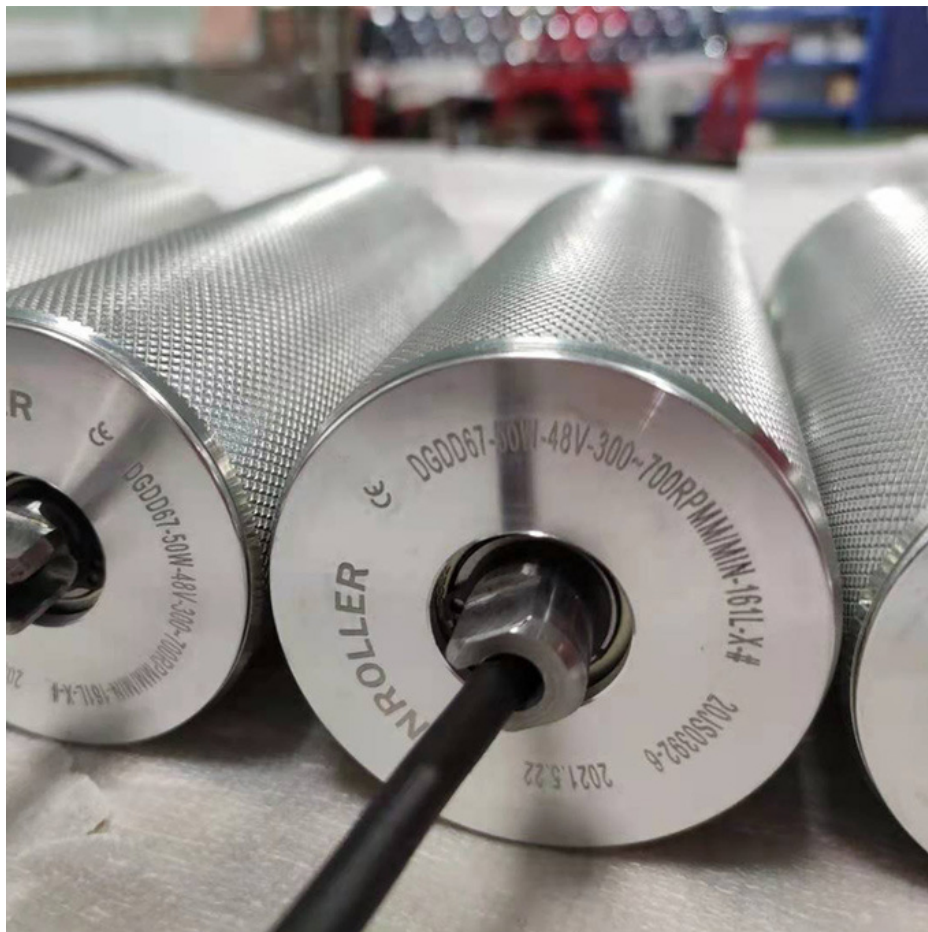
Project	Specifications	Explain
Motor Type	DC brushless motor(BL DC)	
Motor Type	Outer rotor motor	
Voltage	DC48V+-10%	
Number of poles	10	5 pairs of poles
Rated power range	400W	
Speed range	300-762r/min	
Rated torque	6N.m	
Instantaneous maximum torque	18N.m	Not more than 4 seconds
Working system	Indirect working system 25%	Determined according to ambient temperature

Parameters of Electric Roller Driver

Drive type	DC brushless servo driver	Explain
Input rated voltage	DC48V	
Driver rating	400W	Intermittent working system 25%
Drive size	155mm*147.1mm*42mm	
Communication modeA	rs485	38400bps,N,8,1
Power interface	Plug42000-6P (5557)	nylon (PA66) ,UL94V-2/0
	Terminal42000-21RT(5556)	Phosphor bronze (C5191) Wire gauge: 0.12~0.5mm ² , 26~20AWG Outer diameter of wire: 1.1~1.9mm
communication interface	Plug42000-10P(5557)	Nylon (PA66), UL94V-2/0
	Terminal42000-01RT(5556)	Phosphor bronze (C5191) Wire gauge: 0.032~0.08mm ² , 32~28AWG Outer diameter of wire: 0.5~1.0mm
Motor interface	Special interface	
Motor Hall interface	Special interface	
Operating ambient temperature	-20~+85	
Operating ambient humidity	Less than 85%	No water drops and rain

Feature Picture of High Precision Lower Noise Direct Drive Drum Motor With Servo Controller





WIN ROLLER JIANG SU Winroller Technology Co., Ltd.

+86 18168399322

winroller.market@gmail.com

drum-roller.com

