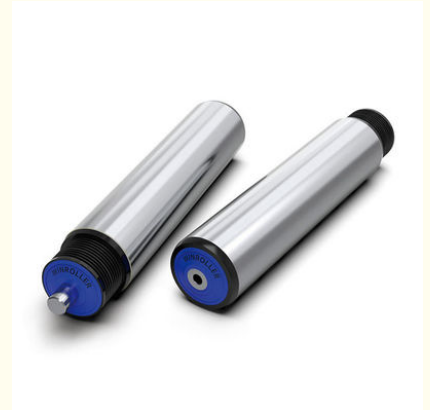


## Polymer Poly-Vee Belt Drive Conveyor Roller With Dust Proof Water Splash Proof For High Speed

Our Product Introduction

### Basic Information

- Place of Origin: China Jiangsu
- Brand Name: Winroller
- Certification: CE,SGS,ISO9001,ROHS,UL
- Model Number: Winroller Gravity Conveyor Roller
- Minimum Order Quantity: 1stick
- Price: Contact Us
- Packaging Details: Wooden case
- Delivery Time: 7-15 word days
- Payment Terms: TT, L/C
- Supply Ability: 1000000/year



### Product Specification

- Product Name: Polymer Poly-Vee Belt Drive Roller
- Application: For The High Speed Applications
- Specificities: Dust Proof And Water Splash Proof
- WidthPipe Diameter:  $\Phi 50\text{mm}$ ,  $\Phi 60\text{mm}$
- Length: Customized
- Maximum Speed: 120m/min
- Temperature Range:  $- 5 \sim + 40$
- Applicable Humidity: 30%~90%RH
- Highlight: **Belt Drive Roller Dust Proof, Splash Proof Belt Drive Roller, Splash Proof conveyor belt rollers**



for more products please visit us on [drum-roller.com](http://drum-roller.com)

## Product Description

### Polymer Poly-Vee Belt Drive Roller Dust Proof Water Splash Proof For High Speed

#### Features Overview of Polymer Poly-Vee Belt Drive Roller Dust Proof And Water Splash Proof For The High Speed Applications

With A20 series design, beautiful and quiet  
High speed (120m/min)  
9 grooves, more PJ belt options (2PJ ~ 4PJ)  
High efficiency, more than 3 times that of the "O" belt  
Suitable for turning conveyor

**Remark:**

φ50/60 tube can be coated with 2mmPVC soft sleeve.  
The roller spacing is selected according to a fixed value, and the pulley driving part needs to be protected

#### Application of Polymer Poly-Vee Belt Drive Roller Dust Proof And Water Splash Proof For The High Speed Applications

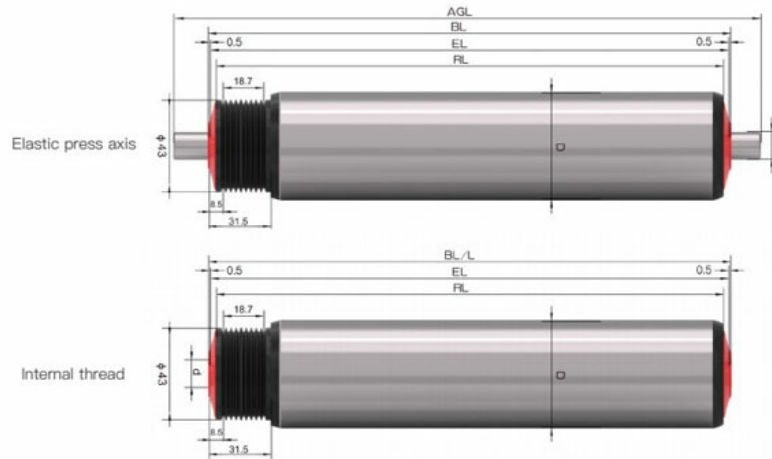
It is commonly used in high speed conveyor applications.

#### Technical Parameters of Polymer Poly-Vee Belt Drive Roller Dust Proof And Water Splash Proof For The High Speed Applications

Polymer Poly-Vee Belt Drive Roller Dust Proof And Water Splash Proof For The High Speed Applications

Pipe diameter and wall thickness	Bearing	Axis center	Roller material	
			Galvanized	Stainless
φ50*1.5	6002	11hex,φ12/15	√	√
φ60*2.0	6002	11hex,φ12/15	√	√

## Profile and parameter introduction



- ★With A20 series design, beautiful and quiet
- ★High conveying speed (120m/min), silent
- ★ 9 grooves, more PJ belt selection (2PJ ~ 4PJ)
- ★High convey efficiency,3 times more than "O" belt
- ★Also suitable for turning conveyor drive

### Remark:

φ50/60 tubes can be sleeved with 2mm PVC soft rubber

Drum spacing is selected according to a fixed value, driving wheel parts need to be protected

RL:roll length

EL: effective length

AG L:axis general length

Important installation size:base frame inner width(BF)

## Feature Picture of Polymer Poly-Vee Belt Drive Roller Dust Proof And Water Splash Proof For The High Speed Applications





**WIN ROLLER JIANG SU Winroller Technology Co., Ltd.**

+86 18168399322

winroller.market@gmail.com

drum-roller.com

No. 7, Xiye Road, Huishan District, Wuxi City, Jiangsu Province, China